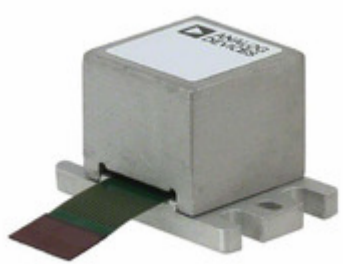


## ADIS16228CMLZ



AHEAD OF WHAT'S POSSIBLE™

**Part Number:** [ADIS16228CMLZ](#)

**Manufacturer:** [ADI \(Analog Devices, Inc.\)](#)

**Description:** IC SENSOR DIGITAL TRI VIB 15-MOD

**Data sheet:** [ADIS16228](#)

**RoHS Status:** Lead free / RoHS Compliant

**Ship From:** Hong Kong

**Shipment Way:** DHL/Fedex/TNT/UPS/EMS

Images are for reference only.  
See Product Specifications for product details.  
Buy **ADIS16228CMLZ** with confidence from  
**Components-Store.com, 1 Year Warranty**

[Request For Quotation](#)

### PRODUCT PARAMETER

<b>Part Number</b>	<a href="#">ADIS16228CMLZ</a>
<b>Manufacturer</b>	<a href="#">ADI (Analog Devices, Inc.)</a>
<b>Description</b>	IC SENSOR DIGITAL TRI VIB 15-MOD
<b>Lead Free Status / RoHS Status</b>	Lead free / RoHS Compliant
<b>Quantity Available</b>	355 pcs
<b>Product Photo</b>	<a href="#">ADIS16228CMLZ.jpg</a>
<b>Category</b>	<a href="#">Sensors, Transducers</a>
<b>Termination</b>	-
<b>Series</b>	iSensor™
<b>Sensor Type</b>	Acceleration
<b>Sensitivity</b>	-
<b>Sensing Range</b>	±18g
<b>Power - Rated</b>	3.0 V ~ 3.6 V / 40mA
<b>Package / Case</b>	Module
<b>Output Type</b>	Digital
<b>Operating Temperature</b>	-40°C ~ 125°C
<b>Mounting Type</b>	Chassis Mount
<b>Moisture Sensitivity Level (MSL)</b>	1 (Unlimited)
<b>Lead Free Status / RoHS Status</b>	Lead free / RoHS Compliant
<b>Features</b>	Programmable
<b>Detailed Description</b>	Acceleration Sensor Digital Chassis Mount
<b>Base Part Number</b>	ADIS16228

Components-Store.com is a Reliable Stocking Distributor of Electronic Components. We specialize in all ADI (Analog Devices, Inc.) series electronic components. We have 355 pieces of ADI (Analog Devices, Inc.) ADIS16228CMLZ in stock available now. Request a quote from electronics components distributor at Components-Store.com, our sales team will contact you within 24 hours.  
RFQ Email: [info@Components-Store.com](mailto:info@Components-Store.com)

### RELATED PRODUCTS

	<b>Part#:</b> <a href="#">ADIS16210CMLZ</a> <b>Description:</b> IMU ACCEL/INCLINE SPI 15ML	<b>Manufacturers:</b> <a href="#">ADI (Analog Devices, Inc.)</a> <b>In Stock:</b> 529	<a href="#">RFQ</a>
	<b>Part#:</b> <a href="#">ADIS16266BCCZ</a> <b>Description:</b> IC GYROSCOPE YAW RATE SPI 20LGA	<b>Manufacturers:</b> <a href="#">ADI (Analog Devices, Inc.)</a> <b>In Stock:</b> 4717	<a href="#">RFQ</a>
	<b>Part#:</b> <a href="#">ADIS16240ABCZ</a> <b>Description:</b> ACCELEROMETER 19G SPI 112BGA	<b>Manufacturers:</b> <a href="#">ADI (Analog Devices, Inc.)</a> <b>In Stock:</b> 2198	<a href="#">RFQ</a>
	<b>Part#:</b> <a href="#">ADIS16227CMLZ</a> <b>Description:</b> SENSOR VIBRATION -70+70G MODUL	<b>Manufacturers:</b> <a href="#">ADI (Analog Devices, Inc.)</a> <b>In Stock:</b> 348	<a href="#">RFQ</a>
	<b>Part#:</b> <a href="#">ADIS16228/PCBZ</a> <b>Description:</b> BOARD EVAL ADIS16228	<b>Manufacturers:</b> <a href="#">ADI (Analog Devices, Inc.)</a> <b>In Stock:</b> 5039	<a href="#">RFQ</a>
	<b>Part#:</b> <a href="#">ADIS16265/PCBZ</a> <b>Description:</b> BOARD EVALUATION FOR ADIS16265	<b>Manufacturers:</b> <a href="#">ADI (Analog Devices, Inc.)</a> <b>In Stock:</b> 942	<a href="#">RFQ</a>
	<b>Part#:</b> <a href="#">ADIS16210/PCBZ</a> <b>Description:</b> BOARD EVAL FOR ADIS16210	<b>Manufacturers:</b> <a href="#">ADI (Analog Devices, Inc.)</a> <b>In Stock:</b> 5086	<a href="#">RFQ</a>
	<b>Part#:</b> <a href="#">ADIS16260/PCBZ</a> <b>Description:</b> BOARD EVALUATION FOR ADIS16260	<b>Manufacturers:</b> <a href="#">ADI (Analog Devices, Inc.)</a> <b>In Stock:</b> 5163	<a href="#">RFQ</a>
	<b>Part#:</b> <a href="#">ADIS16266/PCBZ</a> <b>Description:</b> BREAKOUT BOARD FOR ADIS16266	<b>Manufacturers:</b> <a href="#">ADI (Analog Devices, Inc.)</a> <b>In Stock:</b> 5926	<a href="#">RFQ</a>
	<b>Part#:</b> <a href="#">ADIS16240/PCBZ</a> <b>Description:</b> BOARD EVAL FOR ADIS16240	<b>Manufacturers:</b> <a href="#">ADI (Analog Devices, Inc.)</a> <b>In Stock:</b> 5349	<a href="#">RFQ</a>
	<b>Part#:</b> <a href="#">ADIS16300AMLZ</a> <b>Description:</b> IMU ACCEL/GYRO 3-AXIS SPI 24ML	<b>Manufacturers:</b> <a href="#">ADI (Analog Devices, Inc.)</a> <b>In Stock:</b> 4560	<a href="#">RFQ</a>
	<b>Part#:</b> <a href="#">ADIS16227/PCBZ</a> <b>Description:</b> EVAL BOARD FOR ADIS16227	<b>Manufacturers:</b> <a href="#">ADI (Analog Devices, Inc.)</a> <b>In Stock:</b> 5901	<a href="#">RFQ</a>
	<b>Part#:</b> <a href="#">ADIS16209CCCZ</a> <b>Description:</b> IMU ACCEL/INCLINE SPI 16LGA	<b>Manufacturers:</b> <a href="#">ADI (Analog Devices, Inc.)</a> <b>In Stock:</b> 1562	<a href="#">RFQ</a>
	<b>Part#:</b> <a href="#">ADIS16265BCCZ</a> <b>Description:</b> IC SENSOR GYRO PROGR 10MV 20LGA	<b>Manufacturers:</b> <a href="#">ADI (Analog Devices, Inc.)</a> <b>In Stock:</b> 969	<a href="#">RFQ</a>
	<b>Part#:</b> <a href="#">ADIS16220CCCZ</a> <b>Description:</b> ACCELEROMETER 70G SPI 16LGA	<b>Manufacturers:</b> <a href="#">ADI (Analog Devices, Inc.)</a> <b>In Stock:</b> 4108	<a href="#">RFQ</a>
	<b>Part#:</b> <a href="#">ADIS16223/PCBZ</a> <b>Description:</b> BOARD EVAL FOR ADIS16223	<b>Manufacturers:</b> <a href="#">ADI (Analog Devices, Inc.)</a> <b>In Stock:</b> 4112	<a href="#">RFQ</a>
	<b>Part#:</b> <a href="#">ADIS16223CMLZ</a> <b>Description:</b> SENSOR VIBRATION -70+70G MODUL	<b>Manufacturers:</b> <a href="#">ADI (Analog Devices, Inc.)</a> <b>In Stock:</b> 394	<a href="#">RFQ</a>
	<b>Part#:</b> <a href="#">ADIS16260BCCZ</a> <b>Description:</b> IC SENSOR GYRO PROGR 10MV 20LGA	<b>Manufacturers:</b> <a href="#">ADI (Analog Devices, Inc.)</a> <b>In Stock:</b> 1225	<a href="#">RFQ</a>
	<b>Part#:</b> <a href="#">ADIS16220/PCBZ</a> <b>Description:</b> BOARD EVAL FOR ADIS16220	<b>Manufacturers:</b> <a href="#">ADI (Analog Devices, Inc.)</a> <b>In Stock:</b> 5543	<a href="#">RFQ</a>
	<b>Part#:</b> <a href="#">ADIS16229AMLZ</a> <b>Description:</b> SENSOR VIBRATION W/RF TXRX	<b>Manufacturers:</b> <a href="#">ADI (Analog Devices, Inc.)</a> <b>In Stock:</b> 289	<a href="#">RFQ</a>

### Related keywords for ADIS16228CMLZ

ADI (Analog Devices, Inc.) ADIS16228CMLZ	ADIS16228CMLZ distributor	ADIS16228CMLZ supplier	ADIS16228CMLZ price
ADIS16228CMLZ download datasheet	ADIS16228CMLZ datasheet	ADIS16228CMLZ stock	buy ADIS16228CMLZ
ADI (Analog Devices, Inc.) ADIS16228CMLZ	AD ADIS16228CMLZ	ADI (Analog Devices, Inc.) ADIS16228CMLZ	Analog Devices Inc. ADIS16228CMLZ
Analog Devices, Inc. ADIS16228CMLZ			